

\$3.8 BILLION
economic contribution



23, 200 JOBS

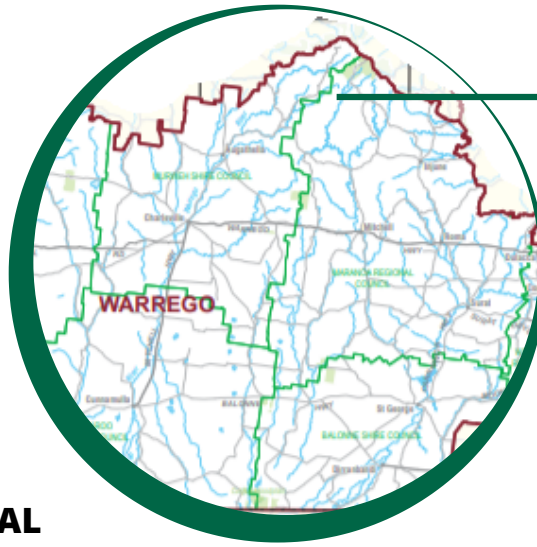


11 600 direct jobs with every direct job creating another indirect job

- 26 Softwood Sawmills
- 59 Hardwood Sawmills
- 14 Cypress Sawmills

70% REGIONAL

The majority of jobs are located in shaded regional areas (outside of Brisbane)



317 JOBS

159 direct jobs with every direct job creating another indirect job



\$112 MILLION

industry economic activity in the Southern Queensland region

Jobs | Regional | Renewable | Carbon friendly | Innovative | Value added

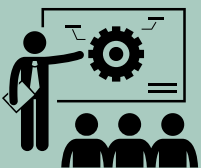
INDUSTRY REQUIREMENTS FOR GROWTH



Resource Security



Supply Chain & Manufacturing Competitiveness



Skills & Training

MAJOR LOCAL EMPLOYERS - SOUTHERN REGION

- Hornick Cypress
- Injune Cypress
- Yuleba Cypress
- Walker Cypress
- Queensland Cypress Supplies
- Vic's Timber & Dressing
- Managed Native Forests (public sector)
- Murray Logging
- Ironbark Timber Supplies
- Presnell Logging

Queensland's timber industry is the state's third most valuable agricultural processing industry. We have a strong value chain footprint, with wood processing and timber manufacturing accounting for around 70% of the 11,600 direct timber industry jobs.